

Newsletter



IN THIS ISSUE

**EXTERNAL ADVISORY
BOARD MEETING**

**GEORGIA TECH ROAD
SHOW**

**CHANGE IN BISB CORE
LEADERSHIP**

**CORE SERVICES
HIGHLIGHT**

**UPCOMING
PRESENTATIONS AND
WORKSHOPS**

TRACCOLADES

RECENT PUBLICATIONS

TRAC External Advisory Board Meeting

On June 13th the Emory/GA TRAC held its inaugural External Advisory Board meeting to review the TRAC's goals and receive expert input from members. The Board membership includes Dr. Jerry Ellner (Rutgers University), Dr. Christina Stallings (Washington University), Dr. Jeremiah Chakaya (Liverpool School of Tropical Medicine), Dr. Mercedes Becerra (Harvard University), Dr. Soumya Swaminathan (formerly WHO) and Dr. Neil Schluger (New York Medical College). The TRAC is grateful for their guidance and looks forward to continued input in building the best program possible.

Georgia Tech Road Show

On June 22nd a symposium was held on the Georgia Tech campus for investigators from Emory, UGA and Georgia Tech to present their current research projects. The goal of the Road Show is to inspire collaboration between new partners that will eventually result in new, joint research projects, and grant applications.

Presentations covered such topics as vaccine development and distribution, biomarker discovery and point of care diagnostics, TB immunology, transmission patterns, post-TB lung disease and more. We look forward to seeing what future collaborations result from the meeting.

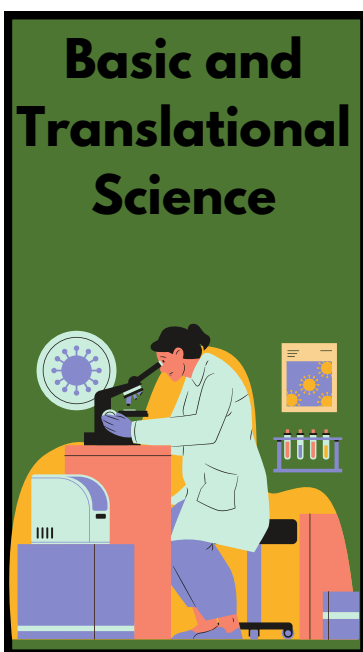


BISB Core Leadership Change



We are pleased to announce a transition in the leadership of the Bioinformatics and Integrated Systems Biology core. Core Co-Director Dr. Jeff Collins will be taking on the role of Core Director, and Dr. Ashish Sharma will now serve in the role of Co-Director. The TRAC thanks Dr. Rafick Sekaly for his guidance and vision in establishing the BISB core, and wishes him the best with the new initiative that he will be leading. We look forward to the leadership and direction Drs. Collins and Sharma will provide.

Core Services Highlight: BTS Core



The Basic and Translational Science Core of the TRAC provides laboratory support for TRAC members in a number of ways. Services available include:

- Consultation for design of experimental lab assays
- Laboratory training in the areas of biosafety, the collection and handling of MTB cultures, MTB infection in animal models, development and execution of lab assays and design of Standard Operating Procedures (SOPs)
- Generating preliminary data for funding applications
- Storage of samples of human and animal specimens, as well as MTB strains, and a biorepository of samples with the eventual goal of allowing access in order to create application-generating data.

A complete list of service descriptions can be found on the TRAC website under "Resources"

Upcoming Workshops & Presentations

Influential Mentoring Workshop Series

The Emory/Georgia TRAC held the first session of the Influential Mentoring workshop series for Mentors and Mentees led by Dr. Dawn Comeau on Thursday July 13th. Dr. Comeau is an expert in the area of Mentor Training and this series of trainings will provide guidance on the key components of a productive and successful mentoring relationship. Those interested in attending the rest of the 6-part series can register [HERE](#).



Genomic evidence for adaptation to tuberculosis in the Andes before European contact



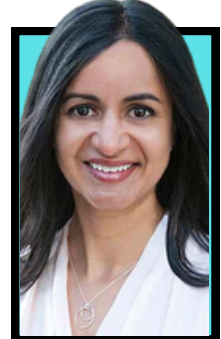
Sophie K. Joseph is a PhD candidate in the Lindo Ancient DNA Lab in the Department of Anthropology. In this session of the Works in Progress series she will review the evidence for a human immune-system response to TB in ancient Andeans and the clues it gives as to when and how their genomes may have adapted to that exposure. Previously published research found evidence of the tuberculosis bacterium in the skeletal material of 1,400-year-old Andean mummies, contradicting some theories that TB did not exist in South America until the arrival of Europeans 500 years ago.

Friday August 18, 2023 9:00am

[Zoom Link](#) or RRR 226

TRACcolades

CPS core co-Director **Dr. Sarita Shah** has been promoted to the position of Professor at Emory with a primary appointment in the Department of Epidemiology, and secondary appointments in Global Health (School of Public Health) and Infectious Disease (School of Medicine). In addition to her promotion, Dr. Shah was also awarded an NIH K24 grant titled "Mentoring Multidisciplinary Patient-Oriented Research in Tuberculosis, HIV, and Global Health." Congratulations Dr. Shah!



Congratulations are also owed to TRAC External Advisory Board member **Dr. Neil Schluger**, as he has been named the next Dean of the School of Medicine at New York Medical College. An internationally recognized pulmonologist, Dr. Schluger has served as the Barbara and William Rosenthal Chair of the Department of Medicine and professor of medicine at NYMC and director of medicine at Westchester Medical Center since 2020.

Recent Publications

Cerebrospinal Fluid and Tuberculous Meningitis DOI: <https://doi.org/10.1093/cid/ciad186>

Clinical utility of WHO-recommended screening tools and development and validation of novel clinical prediction models for pulmonary tuberculosis screening among outpatients living with HIV: an individual participant data meta-analysis DOI: <https://doi.org/10.1183/16000617.0021-2023>

Circulating biomarkers, FeNO, and lung function in patients with HIV and tuberculosis DOI: <https://doi.org/10.1093/infdis/jiad232>

Measuring indirect transmission-reducing effects in tuberculosis vaccine efficacy trials: why and how? DOI: [https://doi.org/10.1016/S2666-5247\(23\)00112-X](https://doi.org/10.1016/S2666-5247(23)00112-X)

Scale up of rifapentine-isoniazid (3HP) for tuberculosis prevention amongst household contacts in two urban centers: An effectiveness assessment DOI: [10.1093/cid/ciad245](https://doi.org/10.1093/cid/ciad245)

SMA-TB: study protocol for the phase 2b randomized double-blind, placebo-controlled trial to estimate the potential efficacy and safety of two repurposed drugs, acetylsalicylic acid and ibuprofen, for use as adjunct therapy added to, and compared with, the standard WHO recommended TB regimen DOI: <https://doi.org/10.1186/s13063-023-07448-0>

Standard-dose versus double-dose dolutegravir in HIV-associated tuberculosis in South Africa (RADIANT-TB): a phase 2, non-comparative, randomised controlled trial DOI: [https://doi.org/10.1016/s2352-3018\(23\)00081-4](https://doi.org/10.1016/s2352-3018(23)00081-4)

Symptoms and Systemic Drug Reactions in Persons Receiving Weekly Rifapentine Plus Isoniazid (3HP) Treatment for Latent Tuberculosis Infection DOI: <https://doi.org/10.1093/cid/ciad083>

Systematic contact investigation: an essential infection prevention skill to prevent tuberculosis transmission in healthcare settings DOI: <https://doi.org/10.1016/j.ajic.2023.06.014>

Treatment of tuberculous meningitis: Overdue for concerted action DOI: <https://doi.org/10.1016/j.tube.2023.102361>

Two Clinical Prediction Tools to Inform Rapid Tuberculosis Treatment Decision-making in Children DOI: <https://doi.org/10.1093/ofid/ofad245>

CITE THE TRAC
P30AI168386

WEBSITE
TB.EMORY.EDU

TWITTER
@EMORY_TB_CETNTER

Have items to include in the next newsletter? Email them to Laurel.Bristow@emory.edu